

Office to let

Bookcase

Bucharest, Sector 1, 33 A, Calea Dorobanti Str

Building information

Building status	Existing
Year of construction	2016
Parking ratio	1 / 75 sq m
Total building area	2 580 sq m

Commercial terms

Office space*	after login *
Parking	after login *
Service charge*	after login *
Minimum lease term	after login *
Availability	after login *

* Asking terms for m²/month

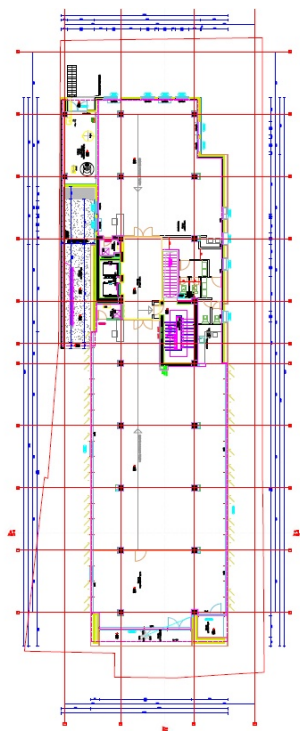
Location



Available space

Building completely leased

Typical floor plan



Public transport

Metro: Piata Romana (M2)

Bus: 131, 301, 331, 300, 381, 783, N117, N119, 79, 86, 133

Contact



+40 21 302 3400

More information